

TERRASSEN-RANDY

Operating instruction

Decking Edger

Type : TR 383/1

- Description
- Safety advices
- Instruction
- Trouble Shooting
- Spare part view
- Declaration of conformity

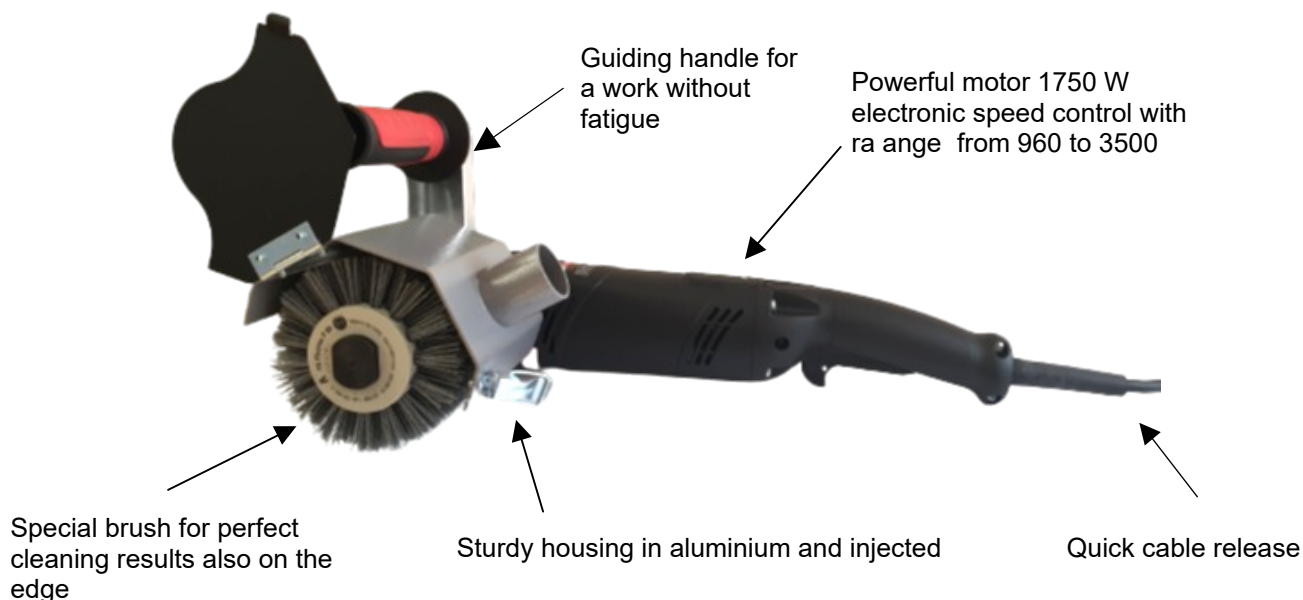


Images and technical dates are not contractual.
Modifications reserved.



Powerful decking cleaning with a high performant cleaning device

You have taken the right decision to buy the FG TERRASSEN - RANDY. Your new decking edger is powerful, ergonomic and has a low weight, therefore it allows a work without fatigue also on big surfaces. It cleans up the edges after having cleaned the surface with the FG TERRASSEN - BLITZ. The optional connection to a vacuum cleaner allows working with a reduced level of dust protection, most important, because the dust of many tropical woods traditionally used for decking often is cancerogenous.



Technical dates

Tension / Frequency:	230 V / 50-60 Hz
brush Nominal current:	7,2 A
Nominal power absorption:	1750 W
Service mode:	S1 (Permanent duty)
Protection class:	II
Speed Brush:	900 – 3500 1/min
Ø Brush:	80 - 120 mm
Brush largeness:	100 mm
Weight:	3,7 kg

Delivery

- 1 TERRASSEN-RANDY incl. 1 cleaning
- 1 Power lead
- 1 Special key SW 24
- 1 Angular key SK 5
- 1 Operation instruction

General description

The **FG TERRASSEN-RANDY** has been developed especially for the cleaning of wooden deckings. Those deckings get grey and dirty after a short time. Getting wet, they are slippery and dangerous. The innovative cleaning brush of the **FG TERRASSEN-RANDY** after the cleaning of the surface takes away the dirt and the grey layer and gives back to the wood the natural beauty also in the edges. If required, the surface can be treated with decking oil immediately.

Read this operating manual carefully before starting work !



Safety advices

Using the **FG TERRASSEN-RANDY** national prescriptions for the protection against electrical hazards, injuries and inflammations are to be observed !

1. Keep your working place in order ! Disorder increases the risk of incidents!

2. Take work area into consideration.

Do not expose the **TERRASSEN-RANDY** to rain. Do not use the **TERRASSEN-RANDY** in dampy or wet surroundings. Ensure good lighting conditions. Do not use the **TERRASSEN-RANDY** in the vicinity of flammable liquids or gases.

3. Keep other people, especially children away from work area.

Provide, that children do not touch the machine and the electrical lead.

4. Protect yourself against electric shock

Avoid physical contact with earthed objects, for example pipes, radiators, ovens, refrigerators. For additional protection we recommend the use of a personal protector plug.

5. Do not overcharge your TERRASSEN-RANDY!

You work more successful and safely in the indicated charge range.

6. Wear a dust mask

Wear a dust mask at least of class P2 when carrying out tasks that create a lot of dust e.g. when emptying the dust bag. The dust of tropical woods are dangerously carcinogenic, allergenic and irritating.

7. Wear appropriated clothes!

Do not wear too wide clothes and use solid shoes.

8. Ear protector

It is highly recommended that you wear an ear protector (special accessory) when sanding, due to the high level of noise during sanding operation 85 dB(A).

9. Employ the TERRASSEN-RANDY only for the intended use.

10. Disconnect mains plug

When assembling or dismantling the machine, when it is not in use, or when carrying out maintenance work e.g. changing the brush drum, you must disconnect the **TERRASSEN-RANDY** from the mains.

11. Covers

The machine shall not be used without the appropriate covers. Do not touch rotating elements.

12. Do not leave any tools in the machine Before switching the machine on check that all spanners and adjusting tools have been removed.

13. Always be alert

Keep the machine constantly under your observation while you work. Act sensibly. Do not operate the machine if you are unable to concentrate.

14. Examine your machine for signs of damage

Before starting work always check carefully that all component parts are in perfect condition to serve their intended purpose. Check that all moving parts are in good working order, that they do not stick and are not damaged. All components must be assembled correctly and meet all requirements in order to guarantee perfect operation of the machine.

15. Prevent fire hazard

Always empty the dust bin on finishing work and before leaving the work area. Depose the dust in a safe place.

16. Reparation should be executed only by an authorized repair service.

19. Electrical safety

The **TERRASSEN-RANDY** is a device of the protection class 1, that means, that only leads and plugs with an earth conductor may be used. Reparation and replacement of plugs only by a qualified repair service.

20. Lead

Only use leads with a sufficient section. The minimal section of the cable is 1,5 mm².

Warning!

For your own safety only use equipment and special accessories specified in the operating manual. The use of tools or accessories other than those recommended in the operating manual could mean a risk of personal injury.

Operating manual

Use of the machine

The **TERRASSEN-RANDY** is delivered assembled and ready for use. Before starting, connect machine to the electric supply. Take care, that the voltage corresponds to the required voltage indicated on the type shield.

Before switching on the machine

Make sure, that the brush does not touch the floor!



Injury hazard! Never switch on the machine without the covers!

The working largeness of the **TERRASSEN-RANDY** is 100 mm, the max. brush diameter is 120 mm. The axle and the brush drum have double key slots. This allows highest running precision and the lowest possible vibration level.

Mounting / Dismounting of the lead

The alimentation lead is to be connected with the special clutch: Insert the clutch in the female part on the machine and turn it slightly to get it locked. To dismount it, turn it in the opposite sens to release it.

Speed control (Fig. 1)

The device is equipped with a continuous speed control at the grip, that allows the speed variation from 960 to 3500 rpm. B - C + D are the ideal speed range, that gives clean and shade-free surfaces. In the case of particular dirty surfaces, the speed can be risen. Please note, that a higher speed level conditions more brush consumption and the risk of burning the wood.

- Hard and tropical woods max. level D
- Pinewoods max. level G

Dust suction

At the brush cover you find a conical tube Ø 37mm for the connection to a vacuum cleaner in order to permit a low level of dust production while sanding.

Danger of fire hazard!

Dust tends to auto-inflammation. Always empty the bin and stock the dust in a fire proof place!

Replacement brush drum (Fig. 2)

Only use the FG special brush drum, that allows you cleaning and smoothening in one step. Fibres are cut off and edges are rounded, so you get a perfect surface also for barefoot walking on it.

To attach the brush, remove the clamping screw, remove the worn brush, place the new brush on the spindle and reattach the clamping screw. To lock, press the black locking button.

Adjusting the angle of the extraction hood with handle (Fig. 3)

Use the SK 5 angle socket wrench to loosen the screw on the holder and adjust the angle of the extraction hood with handle. Tighten the screw again after adjustment.

Coal brush replacement (Fig. 4)

- Switch off the machine and unplug it
- Loosen the screws (Pos. 149) and remove the service cover.
- Disconnect braid, remove coal brush clean coal holders
- Insert Original-FG-coal brushes (they may not stick in the coal holder)
- Re-insert pression springs
- Replace cover and tighten screws

The air conduction slots allow on observation of the coal brush fire. In the case of an important fire, switch off immediately the machine and review it.

Cleaning

The deposal of dust in the interior of the machine can be avoided by blowing it out with compressed air.

Maintenance - Gear drive

The gear grease must be renewed after ca. 1.500 service hours !

Trouble shooting

If against all probability, faults should appear, here is how to find and eliminate them:

Fault	Possible reason	Reparation
Motor does not start	No current	Check alimentation
	Used coal brushes	Replace coal brushes (see ill.)
Weak dust suction	Suction pipe is blocked	Clean pipe

In the case, that the indicated repairing proposals should not resolve the problem, please contact our service office:

Tel.: (Mo – Fr 7⁰⁰ to 17⁰⁰ Uhr): **03594 / 7792600** or e-Mail: **info@fg-online.net**

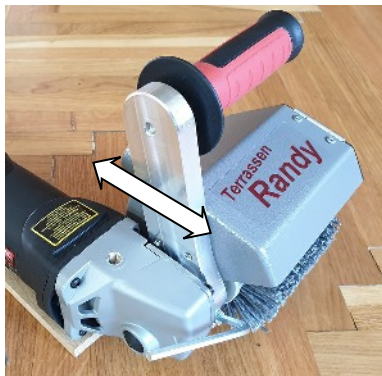
Illustrations:



III. 1: Speed control



III. 2: Brush drum replacement



III. 3: Adjusting suction hood angle with handle



III. 4: Coal brush replacement

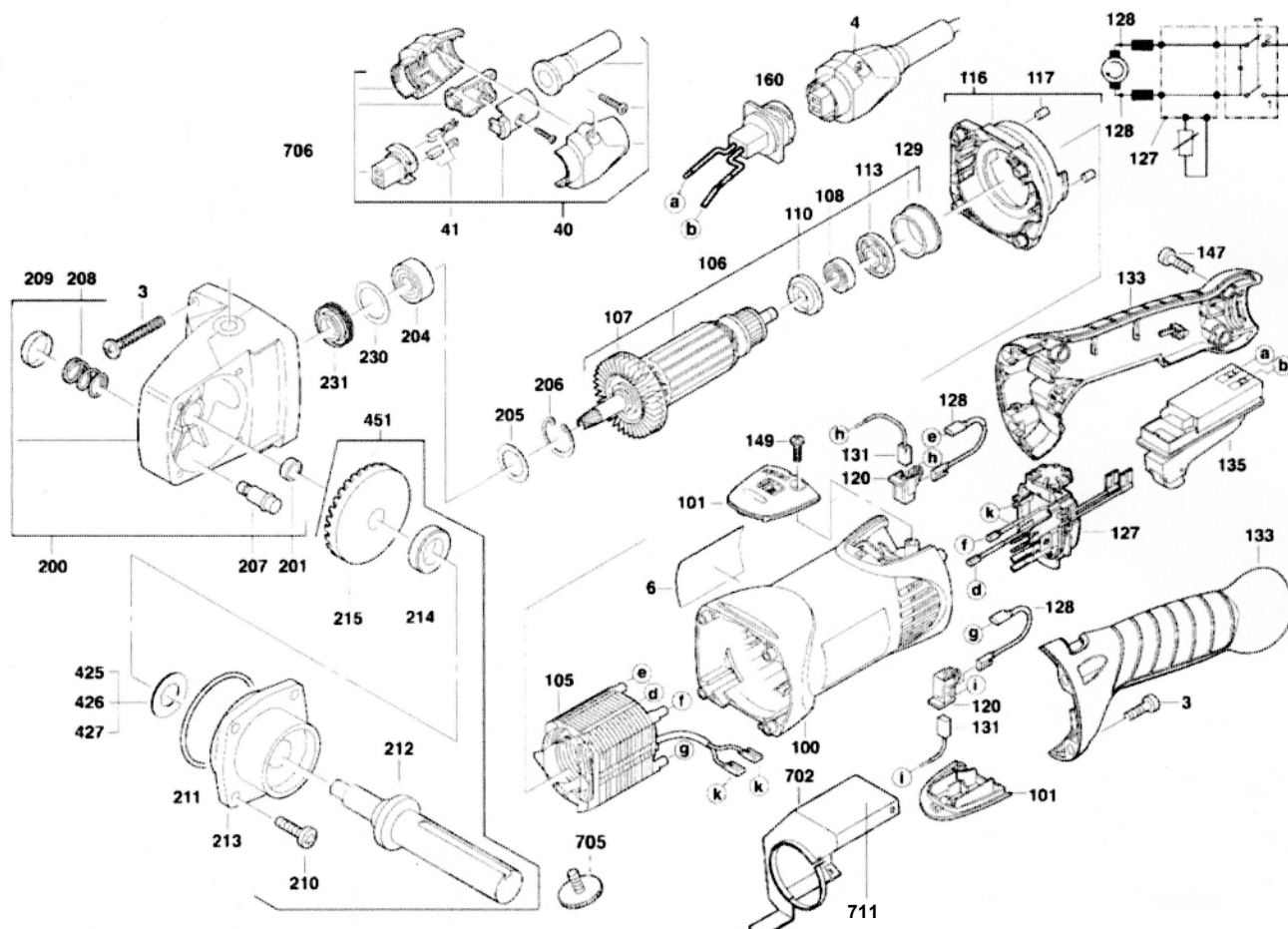
Operation



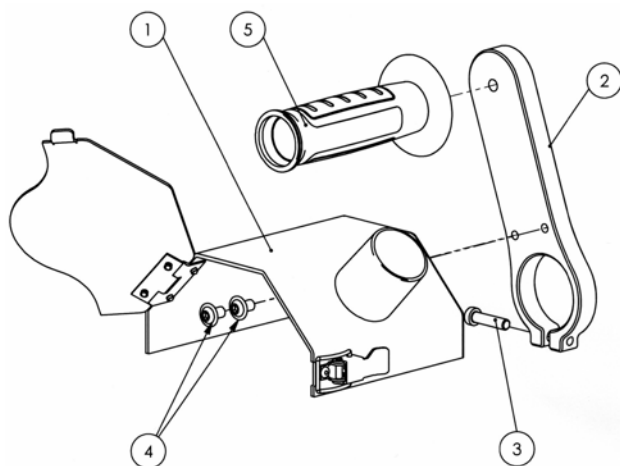
Instruction of use

Pass the device with moderate pressure ahead and back on the surface. With every passage, you should move the machine sideways from the left to the right side. The so achieved oscillation effect gives a homogeneous surface without level differences. A too high speed level and brushing too long on one place can cause heat production and burned spots. Moss and other plants should be removed before starting work.

Spare part view



Pos. 702 Suction hood complete



Pos.	Code	Description
1	383-1110-00	Tin cap cplte.
2	383-1200-01	Holder
3	103004	Screw
4	103961	Screw
5	109473	Handle

Pos.	Art.-No.	Description	Dimension
3	06269	Screw	
4	06270	Quick close cable	
100	06271	Motor frame	
101	06272	Cover	
105	06439	Stator	
106	06440	Anchor	
107	06275	Fan	
108	06276	Ball bearing	
110	06277	Insulating washer	
113	06278	Magnetic washer	
116	06441	Flanch	
117	06280	Treader	
120	06281	Brush support	
127	06282	Electronic module	
128	06283	Cable	
129	06284	Bearing casing	
131	06285	Coal brush	
133	06286	Trigger with rubber coat	
135	06287	Switch	
147	06442	Screw	
149	06289	Screw	
160	06290	Fitting part	
200	06443	Gear box housing with thread insert	
201	06292	Collar	
204	06293	Ball bearing	
205	06294	Washer	
206	06295	Locking ring	
207	06296	Retention pin	
208	06297	Compression spring	
209	06298	Compressor	
210	06299	Screw	
211	06300	Compensation washer	
212	06301	Drill bit incl. adjustment springs	
213	06302	Bearing plate	
214	06203	Spacer ring	
215	06204	Wheel	
217	06305	Blocking ring	
230	06306	Washer	
231	06307	Grease belt washer	
702	383-1200-00	Suction hood cplte.	
705	383 1000 08 00	Tensing screw	
708	383 4000 04 00	Brush roller P46	
708	383 4000 01 00	Brush roller P60	
708	383 4000 02 00	Brushroller P80	
709	383 4000 03 00	Special key SW 24	
711	383 1000 07 00	Label 'Terrassen Randy'	

Incase of order, please indicate:

Machine no., as it is shown on type plate

Pos.-No.

Art.-No.

Description

Quantity

FG Maschinenbau GmbH
FG FLOORTEC

Neustädter Str. 5a

01877 Bischofswerda

Tel. +49(0)3594 7792600 Fax +49(0)3594 7792601

Declaration of EU Conformity
in accordance to the CE machinery directive 2006/42/EG, annexe II A

We herewith declare, that the floor cleaning machine designed as follows

Item name: **Decking edger TERRASSEN-RANDY**

Type: **TR 383/1**

Serial-Nr.: 2025

corresponds to the following prescriptions:

EG-Directives: EG-Machinery directive 2006/42/EG
EM Directive (2004/108/EG)

Applicated harmonized prescriptions, published in the Official Journal of the EU ¹ :

EN ISO 12100, EN ISO 13857, DIN EN 349-Ed.2008

The responsible for the composition of the technical documentations:

Bischofswerda, 01.01.2025



Informations to the undersigner: Friedrich Kirchner, Managing Director

¹ This statement is rendered void if the machine is altered without our consent.

¹ The complete list of applicated norms look company norm CE-TR383/1.